

Axle stub wear limits and preparation

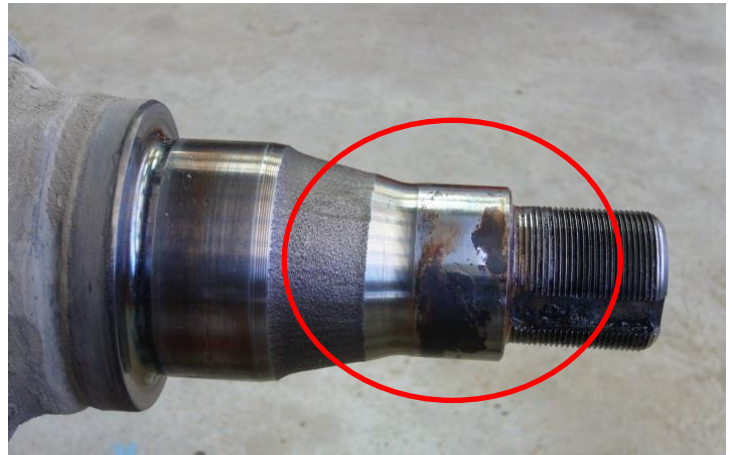
ISSUE TB 17-01

Update of TB 14-02

Once the hub is removed from the axle check the surface of the stub - it may have a brown stain on it

Every sign of this stain must be removed

The stub has a very fine tolerance which needs to be maintained to ensure optimum performance. Do not use sandpaper or emery tape. Scotch pad or similar is suitable



Journal wear limits

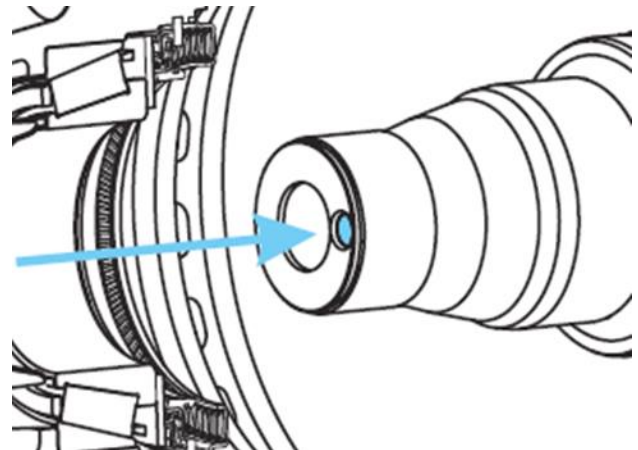
		Nominal journal diameter,mm	Minimum journal diameter,mm
ECO axles	Inner bearing	80	79.90
	Outer bearing	50	49.90
EcoPlus axles	Inner bearing	90	89.870
	Outer bearing	65	64.880

Once the stain and blemishes are gone measure both bearing surfaces on the stub using a micrometer. These need to be greater than the minimum dimensions listed above.

The assembly of the hub is a very temporary act if the axle is reassembled with dimensions less than the minimum

The internal thread in the axle beam (EcoPlus2) must be clean and dry, the use of solvents is preferred (Brakeclean or similar) to remove all old grease and contaminants. Do not use a tap on the thread it has a formed thread which can not be reproduced manually.

The bolt threads must be cleaned completely and lubricated with grease for 75% of the thread length to only fill the thread (too much will cause the bolt to hydraulic and not achieve the tightness required).



The bearing surfaces on the axle journal must be clean then have A&P (Assembly and Protection) spray applied. Ensure it is dry before assembling the hub.