

# AIRLIGHT II SERIES SUSPENSIONS



Air Suspension Side View	Ride Height Range (mm)	Ride Height with Axle Lift (mm)	Height Without Air		Tare Weight per Axle Module (kg)	Drawing Number
			Laden (mm)	Un-laden (mm)		
	215 - 245	245	135	150	150	<a href="#">AU-0001FANZ</a>
	215 - 225	Not suitable	135	150	156	<a href="#">AU-0003NZ</a>
	240 - 265	265	160	175	153	<a href="#">AU-0002NZ</a>
	240 - 265	265	160	175	158	<a href="#">AU-0009NZ</a>
	255 - 280	280	170	190	143	<a href="#">AMT-0004NZ</a> <i>note 1</i>

# AIRLIGHT II SERIES SUSPENSIONS



Air Suspension Side View	Ride Height Range (mm)	Ride Height with Axle Lift (mm)	Height Without Air		Tare Weight per Axle Module (kg)	Drawing Number
			Laden (mm)	Un-laden (mm)		
	280 - 305	305	200	215	143	<a href="#">AMT-0003NZ</a> note 1
	300 - 325	325	205	225	140	<a href="#">AMT-0005NZ</a>
	310-315	Not suitable	230	245	147	<a href="#">AM-0001NZ</a> note 1
	330 - 365	365	235	255	145	<a href="#">AMT-0002NZ</a>
	350 - 380	380	270	285	147	<a href="#">AM-0002NZ</a>

## AIRLIGHT II SERIES SUSPENSIONS



Air Suspension Side View	Ride Height Range (mm)	Ride Height with Axle Lift (mm)	Height Without Air		Tare Weight per Axle Module (kg)	Drawing Number
			Laden (mm)	Un laden (mm)		
	375 - 395	395	290	305	149	<a href="#">AM-0003NZ</a>
	395 - 405	Not suitable	320	335	140	<a href="#">AO-0002NZ</a>
	435 - 460	460	355	370	150	<a href="#">AO-0001NZ</a>

**Note 1:** Suitable for semi-trailers only

**Tare weight** includes axle seat, webbing slings and airbag mount plates

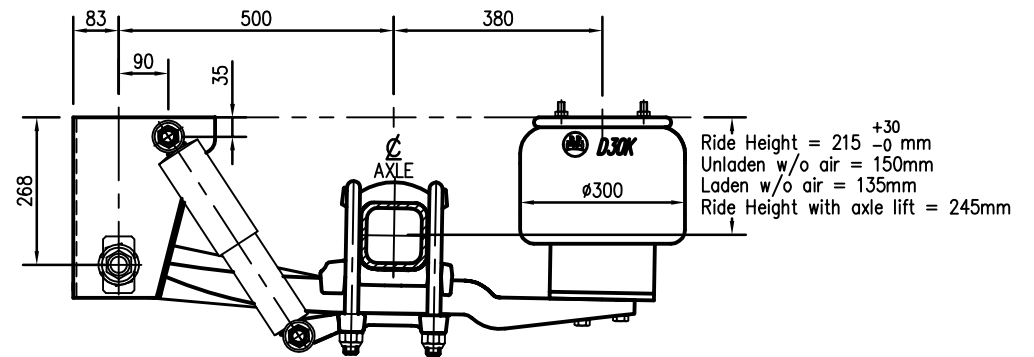
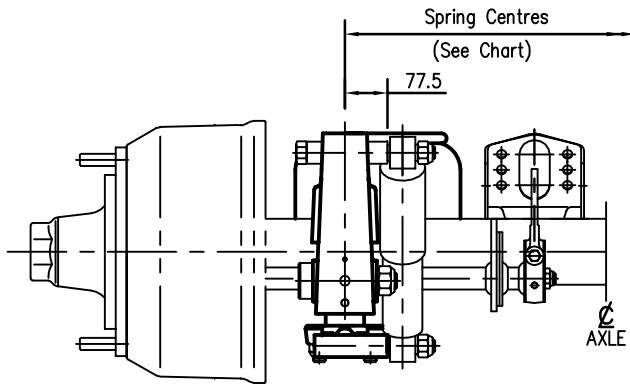
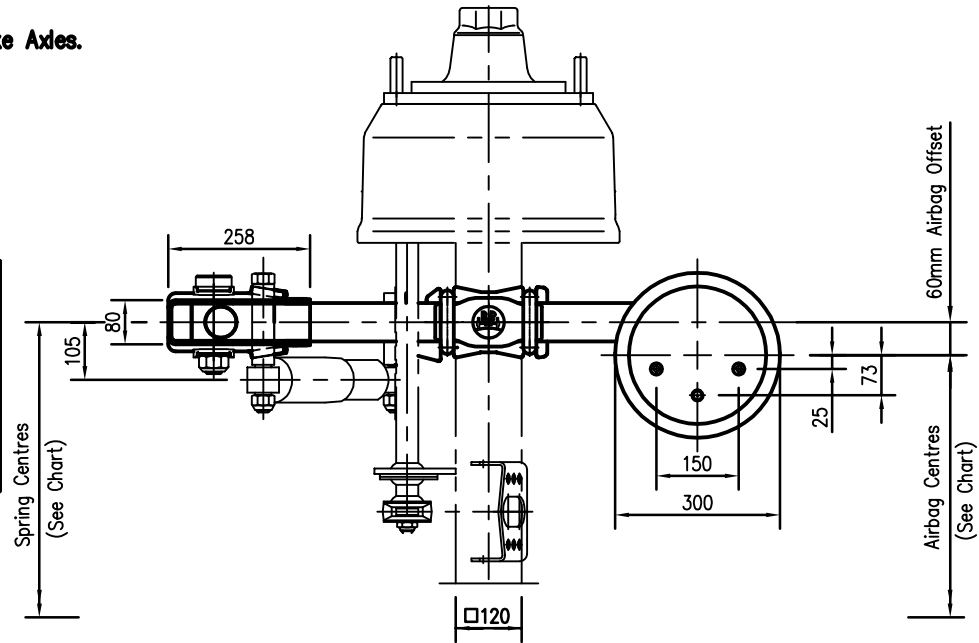
**Ride height** is measured vertically from the center of the axle to the top of the hanger

**NOTES:**

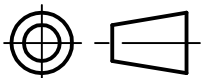
- 10 Stud Axle shown for illustration purposes only.
- This Configuration is suitable for BPW Drum Brake Axles, not suitable for BPW Disc Brake Axles.
- Minimum Axle spacing =1145mm
- Please refer to LO-0018 for hanger bracing instructions.
- Please refer Assembly Guidelines for airbag mounting plate bracing. (Fitment of airbag mounting plate optional)
- Please refer to LO-0032 for catchstrap mounting installation.
- Webbing sling Part No. AS0025/4710 - Standard Fitment.

Allowable Spring / Airbag Centres with BPW Axles to suit:							
Dual 20/22.5" Tyres (1)		Dual 19.5" Tyres (1)		Super Single Tyres (2)		Dual 17.5" Tyres (3)	
Spring Ctrs	Airbag Ctrs	Spring Ctrs	Airbag Ctrs	Spring Ctrs	Airbag Ctrs	Spring Ctrs	Airbag Ctrs
950	830	950	830	1200	1080	980	860
980max	860	980max	860				

- (1) For BPW axles with nominal track between 1820mm & 1855mm.
- (2) For BPW axles with nominal track of 2040mm.
- (3) For BPW axles with nominal track of 1920mm.



DIRECTION OF TRAVEL



UNLESS OTHERWISE STATED ALL DIMENSIONS IN MILLIMETRES.  
UNLESS OTHERWISE STATED ALL TOLERANCES ARE PER :  
BPW WN-1.043 & BPW WN-1.047  
AVAILABLE UPON REQUEST FROM TRANSPORT EFFICIENCY

**BPW** **Transport** **EFFICIENCY**  
PO BOX 58-106  
GREENMOUNT, AUCKLAND, NZ  
PHONE: (09) 2738084.  
FAX: (09) 2738086.

TITLE **SUSPENSION ASSEMBLY**  
**ALI SERIES AU/D30K AIR SUSPENSION**

THIS DRAWING IS COPYRIGHT AND THE SOLE PROPERTY OF TRANSPORT EFFICIENCY, AND MUST NOT BE COPIED OR LOANED WITHOUT WRITTEN PERMISSION AND MUST BE RETURNED UPON REQUEST.

(RIDE HEIGHT = 215 - 245MM)

DRAWN	<b>CHETHAN</b>	APPR'D	
DATE	<b>03-09-2012</b>	SCALE	<b>1-10</b>

DRAWING NO	<b>AU-0001FANZ</b>	REV	<b>B</b>
------------	--------------------	-----	----------

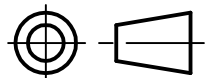
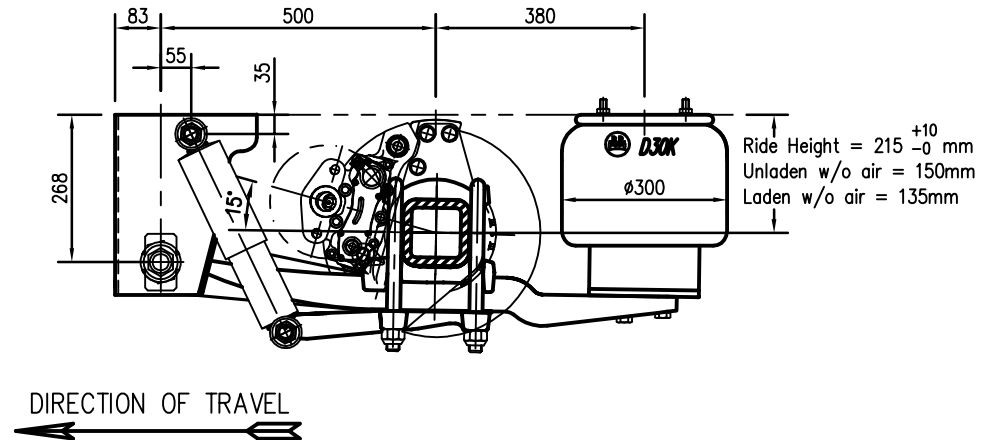
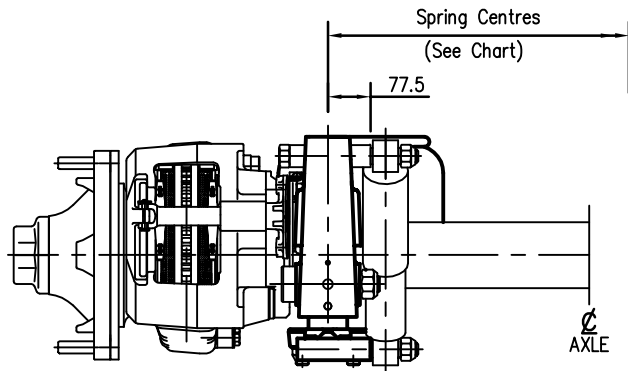
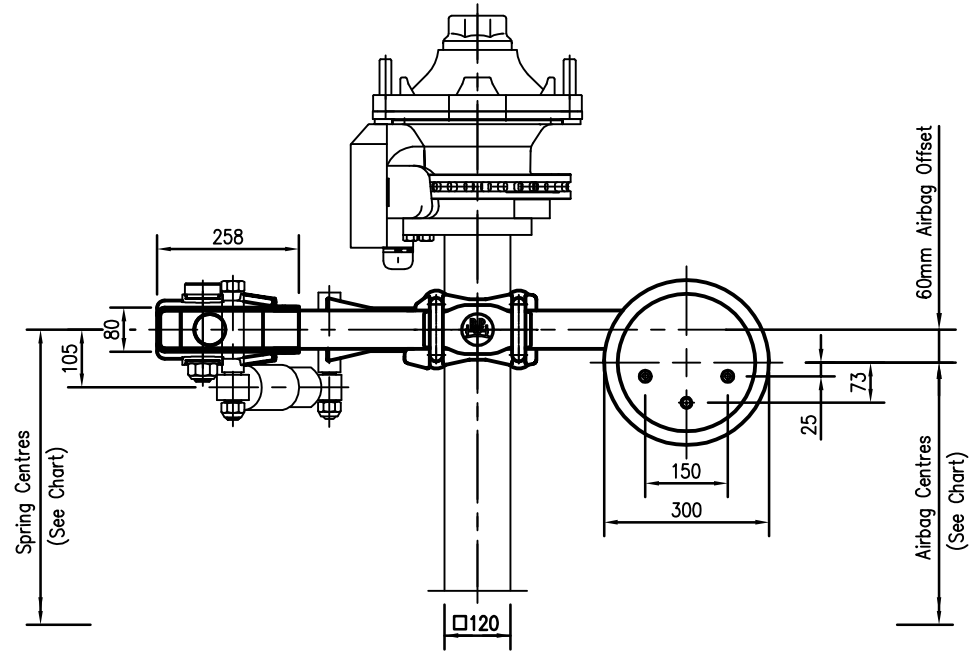
**A3**

**NOTES:**

- BPW SKH2M 15 Degree Series Disc Brake Axle shown.
- To suit 19.5" and 20"/22.5" tyres.
- Minimum Axle spacing =1145mm
- Please refer to LO-0018 for hanger bracing instructions.
- Please refer Assembly Guidelines for airbag mounting plate bracing. (Fitment of airbag mounting plate optional)
- Please refer to LO-0032 for catchstrap mounting installation. Webbing sling Part No. AS0025/4230 – Standard Fitment.
- It is not recommended that Axle Lift be installed with this suspension.

Allowable Spring / Airbag Centres with BPW Axles to suit:					
Dual 20/22.5" Tyres (1)		Dual 19.5" Tyres (1)		Super Single Tyres (2)	
Spring Crs	Airbag Crs	Spring Crs	Airbag Crs	Spring Crs	Airbag Crs
950	830	950	830	1200	1080
980max	860	980max	860		

(1) For BPW TSB3709 disc brake axles with nominal track 1850mm & 1855mm.  
 (2) For BPW axles with nominal track of 2040mm.



UNLESS OTHERWISE STATED ALL DIMENSIONS IN MILLIMETRES.  
 UNLESS OTHERWISE STATED ALL TOLERANCES ARE PER :  
 BPW WN-1.043 & BPW WN-1.047  
 AVAILABLE UPON REQUEST FROM TRANSPORT EFFICIENCY

**Transport EFFICIENCY**  
 PO BOX 58-106  
 GREENMOUNT, AUCKLAND, NZ  
 PHONE: (09) 2738084.  
 FAX: (09) 2738086.

TITLE  
**SUSPENSION ASSEMBLY**  
 ALII SERIES AU/D30K AIR SUSPENSION  
 TO SUIT BPW DISC BRAKE AXLES  
 (RIDE HEIGHT = 215 - 225MM)

THIS DRAWING IS COPYRIGHT AND THE SOLE PROPERTY OF TRANSPORT EFFICIENCY, AND MUST NOT BE COPIED OR LOANED WITHOUT WRITTEN PERMISSION AND MUST BE RETURNED UPON REQUEST.

DRAWN	<b>CHETHAN</b>	APPR'D	
DATE	<b>03-09-2012</b>	SCALE	<b>1-10</b>

DRAWING NO	<b>AU-0003NZ</b>	REV	<b>A</b>
------------	------------------	-----	----------

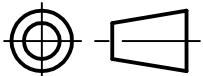
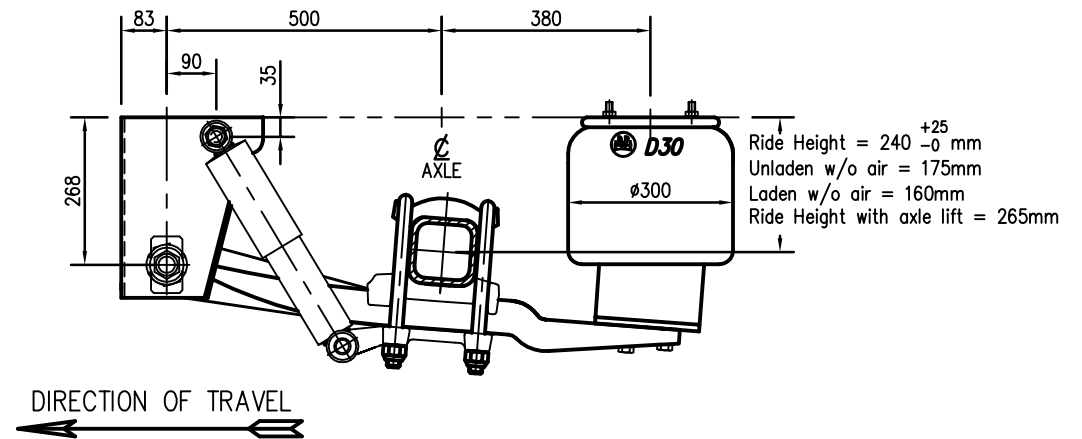
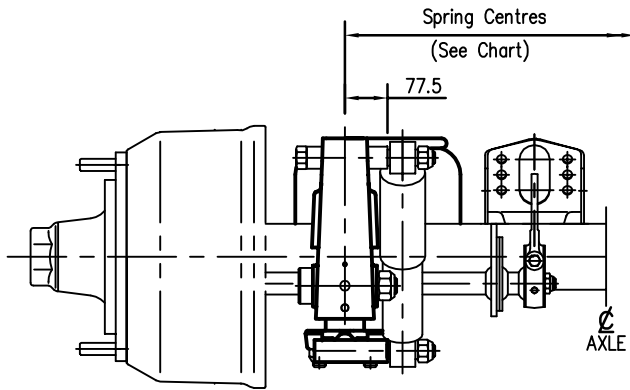
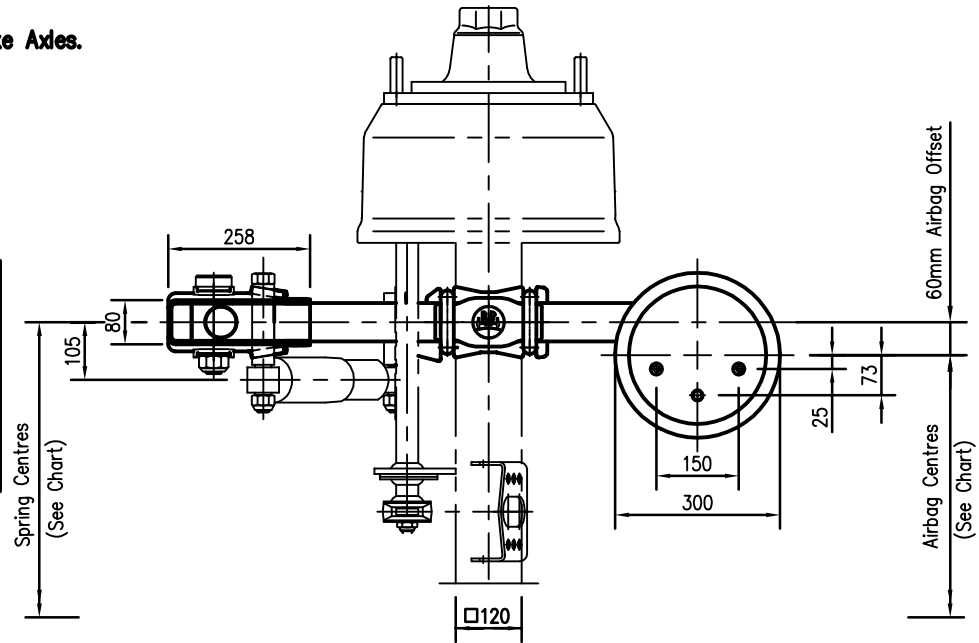
**A3**

**NOTES:**

- 10 Stud Axle shown for illustration purposes only.
- This Configuration is suitable for BPW Drum Brake Axles, not suitable for BPW Disc Brake Axles.
- Minimum Axle spacing =1145mm
- Please refer to LO-0018 for hanger bracing instructions.
- Please refer Assembly Guidelines for airbag mounting plate bracing. (Fitment of airbag mounting plate optional)
- Please refer to LO-0032 for catchstrap mounting installation.
- Webbing sling Part No. AS0025/4710 - Standard Fitment.

Allowable Spring / Airbag Centres with BPW Axles to suit:							
Dual 20/22.5" Tyres (1)		Dual 19.5" Tyres (1)		Super Single Tyres (2)		Dual 17.5" Tyres (3)	
Spring Crs	Airbag Crs	Spring Crs	Airbag Crs	Spring Crs	Airbag Crs	Spring Crs	Airbag Crs
950	830	950	830	1200	1080	980	860
980max	860	980max	860				

- (1) For BPW axles with nominal track between 1820mm & 1855mm.
- (2) For BPW axles with nominal track of 2040mm.
- (3) For BPW axles with nominal track of 1920mm.



UNLESS OTHERWISE STATED ALL DIMENSIONS IN MILLIMETRES.  
UNLESS OTHERWISE STATED ALL TOLERANCES ARE PER :  
BPW WN-1.043 & BPW WN-1.047  
AVAILABLE UPON REQUEST FROM TRANSPORT EFFICIENCY

**BPW** **Transport** EFFICIENCY  
PO BOX 58-106 GREENMOUNT, AUCKLAND, NZ  
PHONE: (09) 2738084.  
FAX: (09) 2738086.

TITLE **SUSPENSION ASSEMBLY**  
**ALI SERIES AU/D30 AIR SUSPENSION**

THIS DRAWING IS COPYRIGHT AND THE SOLE PROPERTY OF TRANSPORT EFFICIENCY, AND MUST NOT BE COPIED OR LOANED WITHOUT WRITTEN PERMISSION AND MUST BE RETURNED UPON REQUEST.

**(RIDE HEIGHT = 240-265MM)**

DRAWN	<b>CHETHAN</b>	APPR'D	
DATE	<b>03-09-2012</b>	SCALE	<b>1-10</b>

DRAWING NO	<b>AU-0002NZ</b>	REV	<b>B</b>
------------	------------------	-----	----------

**A3**

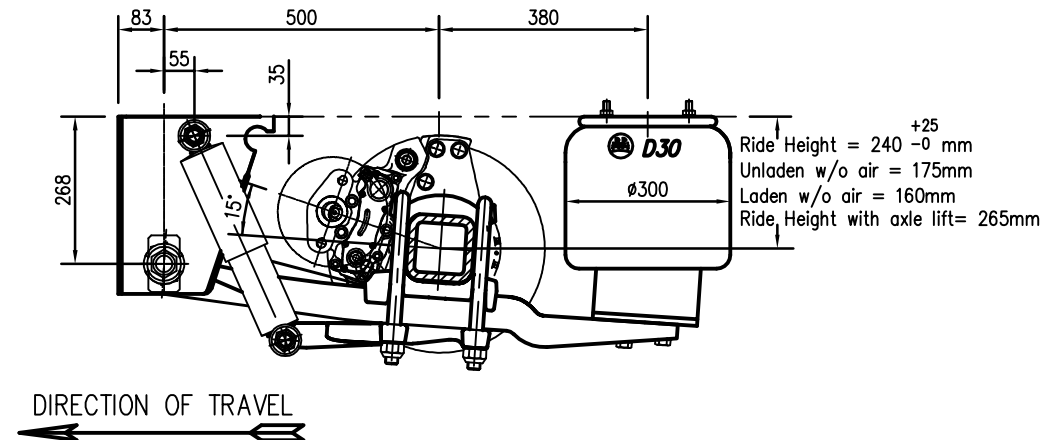
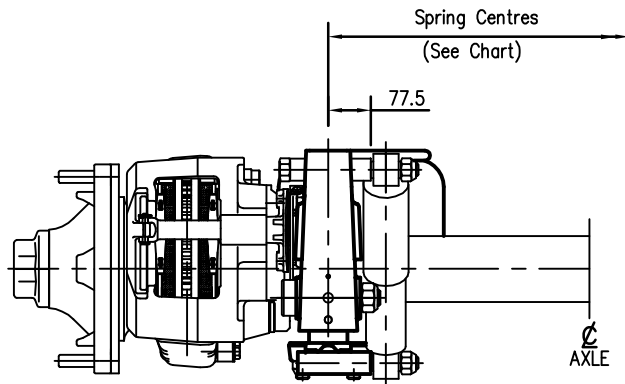
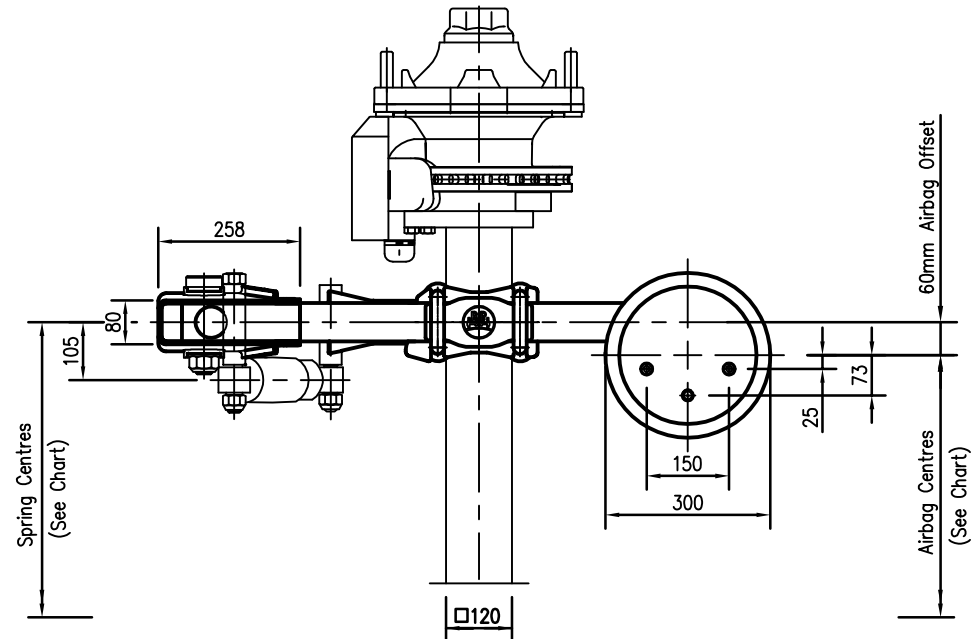
**NOTES:**

-BPW SKH2M 15 Degree Series Disc Brake Axle shown.  
 -To suit 19.5" and 20"/22.5" tyres.

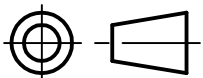
- Minimum Axle spacing =1145mm
- Please refer to LO-0018 for hanger bracing instructions.
- Please refer Assembly Guidelines for airbag mounting plate bracing. (Fitment of airbag mounting plate optional)
- Please refer to LO-0032 for catchstrap mounting installation. Webbing sling Part No. AS0025/4310 - Standard Fitment.

Allowable Spring / Airbag Centres with BPW Axles to suit:					
Dual 20/22.5" Tyres (1)		Dual 19.5" Tyres (1)		Super Single Tyres (2)	
Spring Crs	Airbag Crs	Spring Crs	Airbag Crs	Spring Crs	Airbag Crs
950	830	950max	830	1200	1080
980max	860	980max	860		

(1) For BPW TSB3709 disc brake axles with nominal track 1850mm & 1855mm.  
 (2) For BPW axles with nominal track of 2040mm.



DIRECTION OF TRAVEL



UNLESS OTHERWISE STATED ALL DIMENSIONS IN MILLIMETRES.  
 UNLESS OTHERWISE STATED ALL TOLERANCES ARE PER :  
 BPW WN-1.043 & BPW WN-1.047  
 AVAILABLE UPON REQUEST FROM TRANSPORT EFFICIENCY

**Transport EFFICIENCY**  
 PO BOX 58-106 GREENMOUNT, AUCKLAND, NZ  
 PHONE: (09) 2738084. FAX: (09) 2738086.

TITLE **SUSPENSION ASSEMBLY**  
**ALI SERIES AU/D30 AIR SUSPENSION**  
**TO SUIT BPW DISC BRAKE AXLES**  
**(RIDE HEIGHT = 240-265MM)**

THIS DRAWING IS COPYRIGHT AND THE SOLE PROPERTY OF TRANSPORT EFFICIENCY, AND MUST NOT BE COPIED OR LOANED WITHOUT WRITTEN PERMISSION AND MUST BE RETURNED UPON REQUEST.

DRAWN	<b>CHETHAN</b>	APPR'D		<b>A3</b>
DATE	<b>03-09-2012</b>	SCALE	<b>1-10</b>	

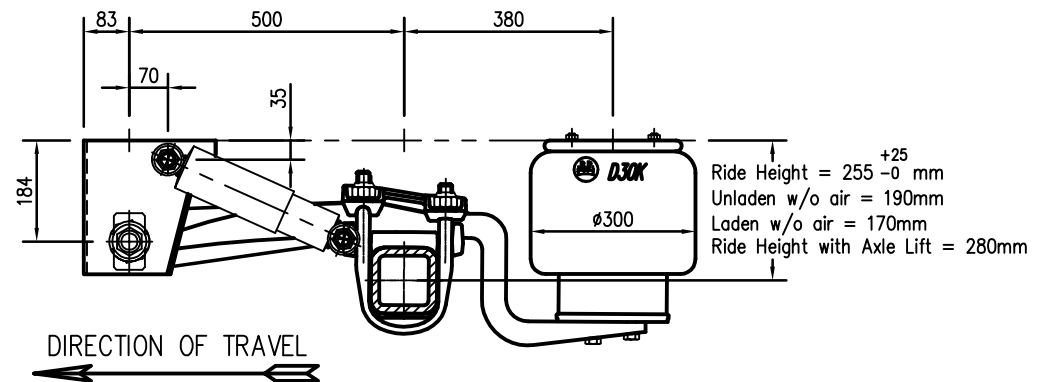
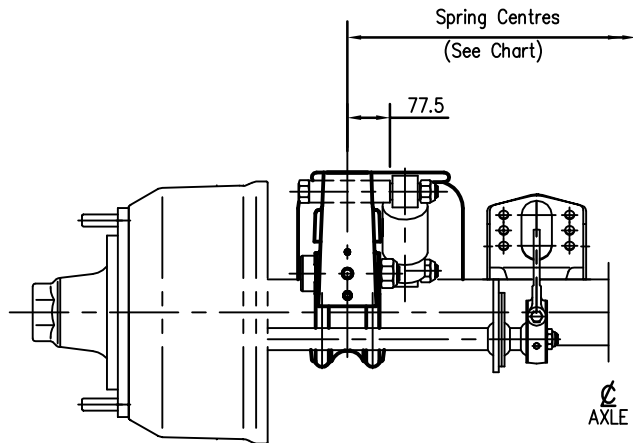
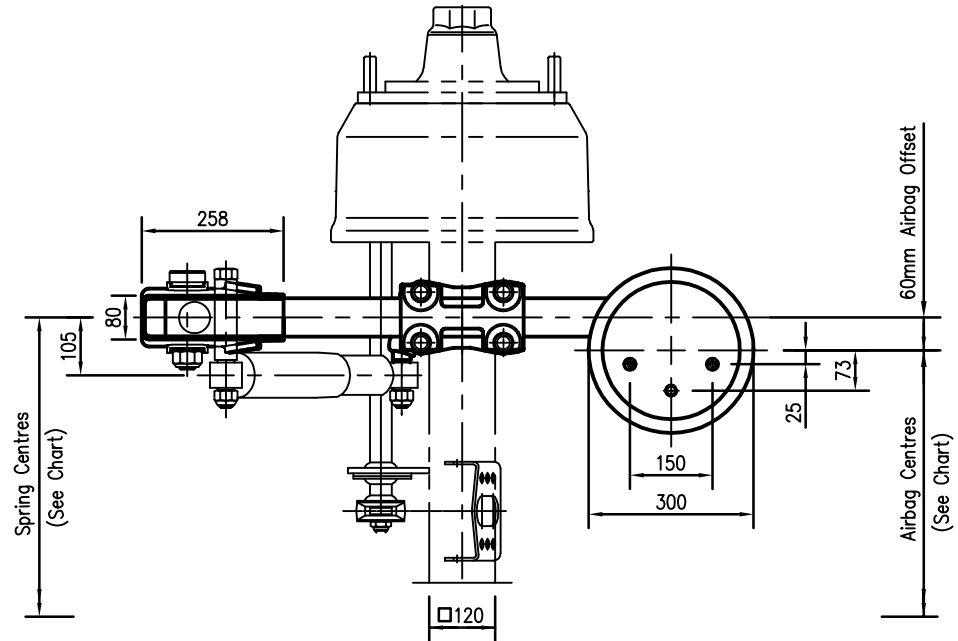
DRAWING NO	<b>AU-0009NZ</b>	REV	<b>A</b>
------------	------------------	-----	----------

**NOTES:**

- 10 Stud Axle shown for illustration purposes only.
- Recommended for use on semi-trailers only.
- Special short shock absorber - Part No: 02.3722.89.00.
- Minimum Axle spacing =1145mm
- Please refer to LO-0018 for hanger bracing instructions.
- Please refer Assembly Guidelines for airbag mounting plate bracing. (Fitment of airbag mounting plate optional)
- Please refer to LO-0032 for catchstrap mounting installation. Webbing sling Part No. AS0025/3800 - Standard Fitment.

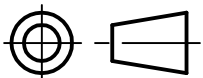
Allowable Spring / Airbag Centres with BPW Axles to suit:					
Dual 20/22.5" Tyres (1)		Dual 19.5" Tyres (1)		Super Single Tyres (2)	
Spring Crs	Airbag Crs	Spring Crs	Airbag Crs	Spring Crs	Airbag Crs
950	830	950	830	1200	1080
980max	860	980max	860		

(1) For BPW drum brake axles with nominal track 1820mm to 1840mm, TSB3709 disc brake axles with nominal track 1850 to 1855mm.  
 (2) For BPW axles with nominal track of 2040mm.



**SPECIAL CONFIGURATION**

	<b>Transport EFFICIENCY</b>		PO BOX 58-106 GREENMOUNT, AUCKLAND, NZ PHONE: (09) 2738084. FAX: (09) 2738086.		TITLE <b>SUSPENSION ASSEMBLY</b> <b>ALII SERIES AMT/D30K AIR SUSPENSION</b>	
	THIS DRAWING IS COPYRIGHT AND THE SOLE PROPERTY OF TRANSPORT EFFICIENCY, AND MUST NOT BE COPIED OR LOANED WITHOUT WRITTEN PERMISSION AND MUST BE RETURNED UPON REQUEST.				<b>(RIDE HEIGHT = 255-280MM)</b>	
DRAWN	<b>CHETHAN</b>	APPR'D		<b>A3</b>	DRAWING NO	<b>AMT-0004NZ</b>
DATE	<b>03-09-2012</b>	SCALE	<b>1-10</b>		REV	<b>B</b>



UNLESS OTHERWISE STATED ALL DIMENSIONS IN MILLIMETRES.  
 UNLESS OTHERWISE STATED ALL TOLERANCES ARE PER :  
 BPW WN-1.043 & BPW WN-1.047  
 AVAILABLE UPON REQUEST FROM TRANSPORT EFFICIENCY



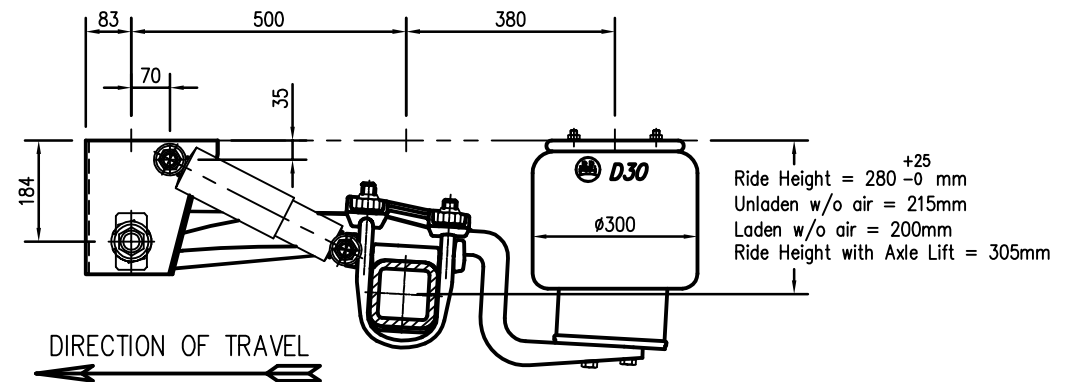
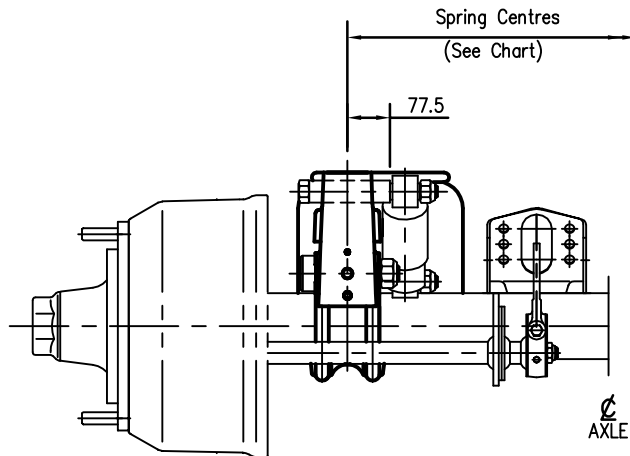
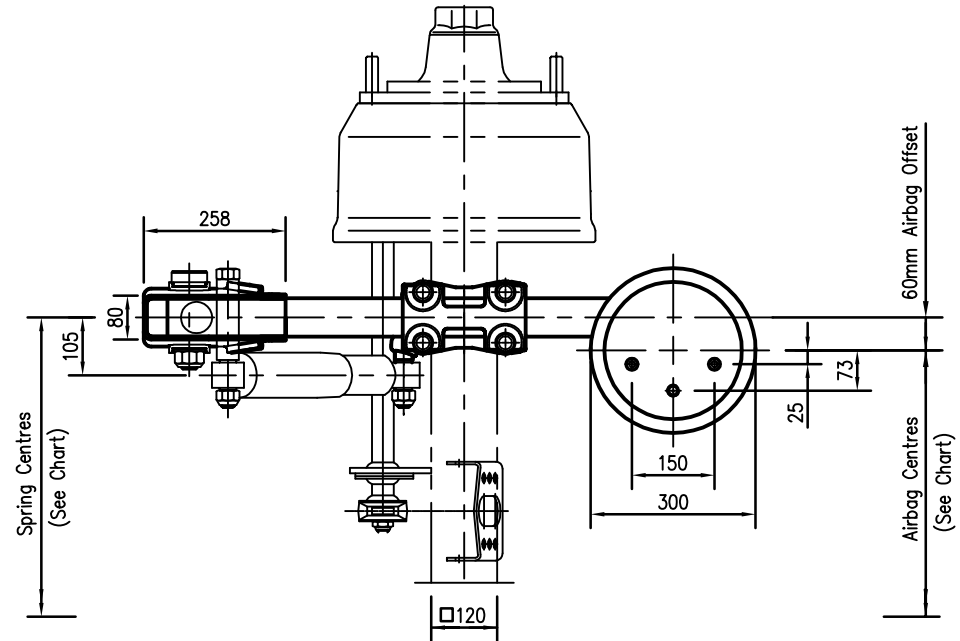
**NOTES:**

- 10 Stud Axle shown for illustration purposes only.
- Recommended for use on semi-trailers only.
- Special short shock absorber - Part No: 02.3722.89.00

- Minimum Axle spacing =1145mm
- Please refer to LO-0018 for hanger bracing instructions.
- Please refer Assembly Guidelines for airbag mounting plate bracing. (Fitment of airbag mounting plate optional)
- Please refer to LO-0032 for catchstrap mounting installation.
- Webbing sling Part No. AS0025/3940 - Standard Fitment.

Allowable Spring / Airbag Centres with BPW Axles to suit:					
Dual 20/22.5" Tyres (1)		Dual 19.5" Tyres (1)		Super Single Tyres (2)	
Spring Crs	Airbag Crs	Spring Crs	Airbag Crs	Spring Crs	Airbag Crs
950	830	950	830	1200	1080
980max	845	980max	860		

- (1) For BPW drum brake axles with nominal track 1820mm to 1840mm, TSB3709 disc brake axles with nominal track 1850 to 1855mm.
- (2) For BPW axles with nominal track of 2040mm.



**SPECIAL CONFIGURATION**

	<b>transport</b> EFFICIENCY		PO BOX 58-106 GREENMOUNT, AUCKLAND, NZ PHONE: (09) 2738084. FAX: (09) 2738086.		TITLE <b>SUSPENSION ASSEMBLY</b> <b>ALI1 SERIES AMT/D30 AIR SUSPENSION</b>	
	UNLESS OTHERWISE STATED ALL DIMENSIONS IN MILLIMETRES. UNLESS OTHERWISE STATED ALL TOLERANCES ARE PER : BPW WN-1.043 & BPW WN-1.047 AVAILABLE UPON REQUEST FROM TRANSPORT EFFICIENCY		THIS DRAWING IS COPYRIGHT AND THE SOLE PROPERTY OF TRANSPORT EFFICIENCY, AND MUST NOT BE COPIED OR LOANED WITHOUT WRITTEN PERMISSION AND MUST BE RETURNED UPON REQUEST.		(RIDE HEIGHT = 280-305MM)	
DRAWN DATE	CHETHAN 03-09-2012	APPR'D SCALE	1-10	A3	DRAWING NO AMT-0003NZ	REV B

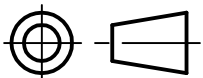
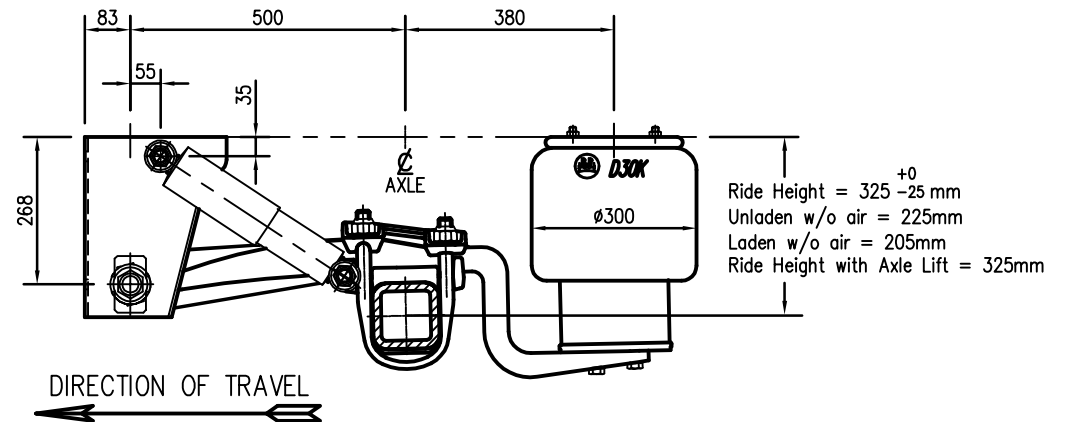
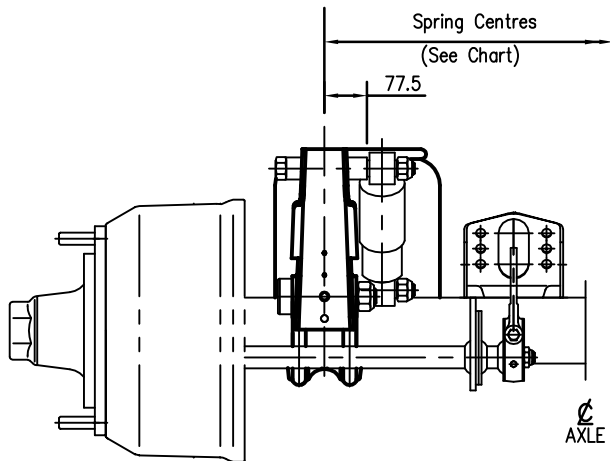
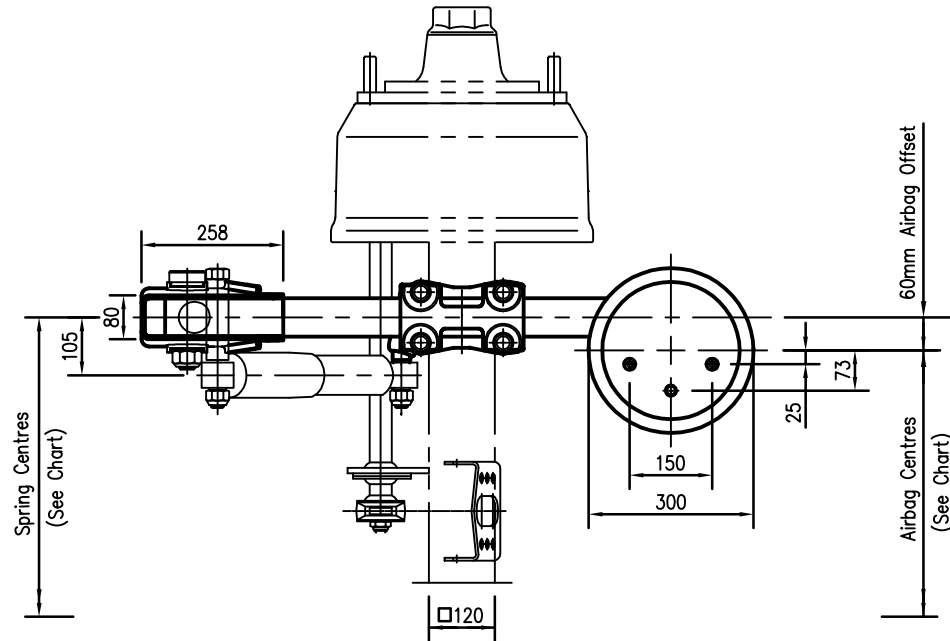
**NOTES:**

-10 Stud Axle shown for illustration purposes only.

- Minimum Axle spacing =1145mm
- Please refer to LO-0018 for hanger bracing instructions.
- Please refer Assembly Guidelines for airbag mounting plate bracing. (Fitment of airbag mounting plate optional)
- Please refer to LO-0032 for catchstrap mounting installation.
- Webbing sling Part No. AS0025/4310 – Standard Fitment.

Allowable Spring / Airbag Centres with BPW Axles to suit:					
Dual 20/22.5" Tyres (1)		Dual 19.5" Tyres (1)		Super Single Tyres (2)	
Spring Crs	Airbag Crs	Spring Crs	Airbag Crs	Spring Crs	Airbag Crs
950	830	950	830	1200	1080
980max	860	980max	860		

- (1) For BPW drum brake axles with nominal track 1820mm to 1840mm, TSB3709 disc brake axles with nominal track 1850 & 1855mm.  
 (2) For BPW axles with nominal track of 2040mm.



UNLESS OTHERWISE STATED ALL DIMENSIONS IN MILLIMETRES.  
 UNLESS OTHERWISE STATED ALL TOLERANCES ARE PER :  
 BPW WN-1.043 & BPW WN-1.047  
 AVAILABLE UPON REQUEST FROM TRANSPORT EFFICIENCY

**Transport EFFICIENCY**  
 PO BOX 58-106  
 GREENMOUNT, AUCKLAND, NZ  
 PHONE: (09) 2738084.  
 FAX: (09) 2738086.

TITLE **SUSPENSION ASSEMBLY**  
**ALI1 SERIES AMT/D30K AIR SUSPENSION**

THIS DRAWING IS COPYRIGHT AND THE SOLE PROPERTY OF TRANSPORT EFFICIENCY, AND MUST NOT BE COPIED OR LOANED WITHOUT WRITTEN PERMISSION AND MUST BE RETURNED UPON REQUEST.

(RIDE HEIGHT = 300-325mm)

DRAWN	<b>CHETHAN</b>	APPR'D	
DATE	<b>03-09-2012</b>	SCALE	<b>1-10</b>

DRAWING NO	<b>AMT-0005NZ</b>	REV	<b>B</b>
------------	-------------------	-----	----------

**A3**

**NOTES:**

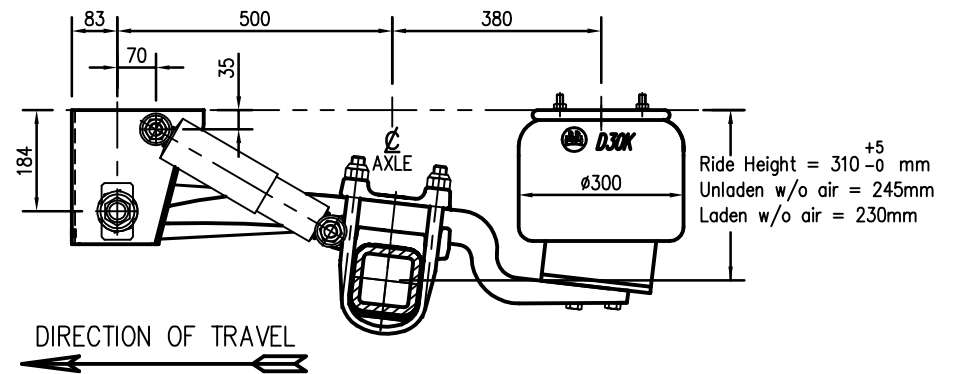
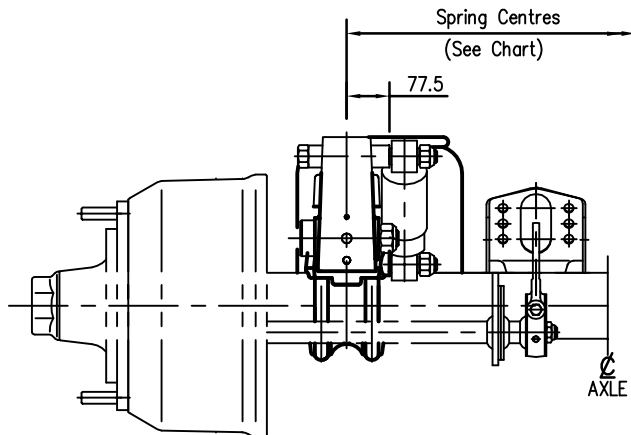
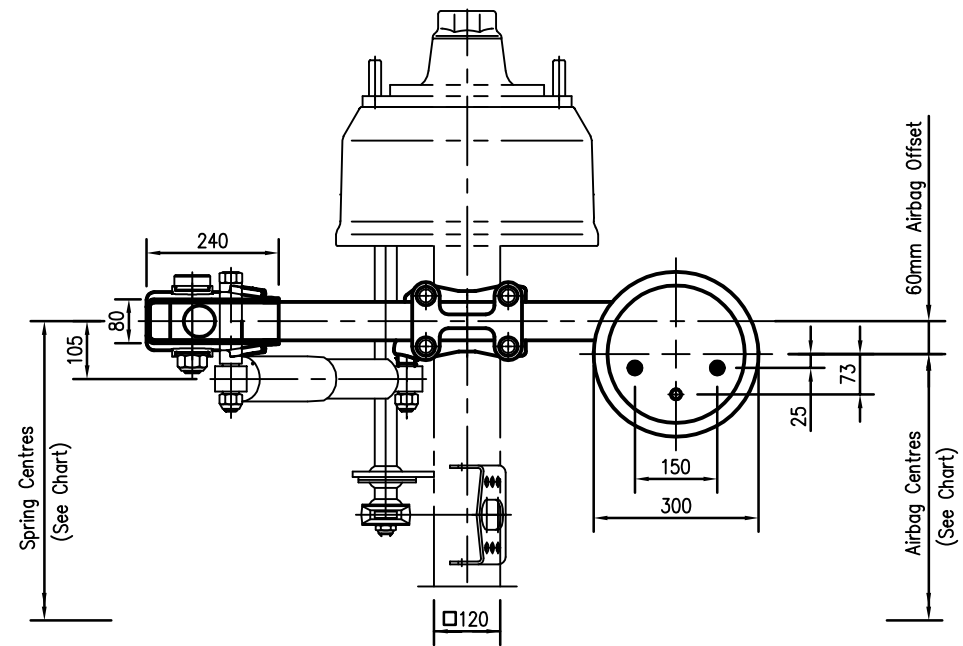
-10 Stud Axle shown for illustration purposes only.

- Minimum Axle spacing =1145mm
- Please refer to LO-0018 for hanger bracing instructions.
- Please refer Assembly Guidelines for airbag mounting plate bracing. (Fitment of airbag mounting plate optional)
- Please refer to LO-0032 for catchstrap mounting installation. Webbing sling Part No. AS0025/3940 – Standard Fitment.

-It is not recommended that Axle Lift be installed with this suspension.

Allowable Spring / Airbag Centres with BPW Axles to suit:					
Dual 20/22.5" Tyres (1)		Dual 19.5" Tyres (1)		Super Single Tyres (2)	
Spring Crs	Airbag Crs	Spring Crs	Airbag Crs	Spring Crs	Airbag Crs
950	830	950	830	1200	1080
980max	860	980max	860		

- (1) For BPW drum brake axles with nominal track 1820mm to 1840mm, TSB3709 disc brake axles with nominal track 1850 to 1855mm.
- (2) For BPW axles with nominal track of 2040mm.



	<b>transport</b> EFFICIENCY	PO BOX 58-106 GREENMOUNT, AUCKLAND, NZ PHONE: (09) 2738084. FAX: (09) 2738086.	TITLE <b>SUSPENSION ASSEMBLY</b> <b>ALI SERIES AM/D30K AIR SUSPENSION</b>	
			(RIDE HEIGHT = 310-315MM)	
THIS DRAWING IS COPYRIGHT AND THE SOLE PROPERTY OF TRANSPORT EFFICIENCY, AND MUST NOT BE COPIED OR LOANED WITHOUT WRITTEN PERMISSION AND MUST BE RETURNED UPON REQUEST.			DRAWING NO <b>AM-0001NZ</b>	REV <b>B</b>
DRAWN <b>CHETHAN</b>	APPR'D _____	DATE <b>03-09-2012</b>		

	UNLESS OTHERWISE STATED ALL DIMENSIONS IN MILLIMETRES.
	UNLESS OTHERWISE STATED ALL TOLERANCES ARE PER : BPW WN-1.043 & BPW WN-1.047
	AVAILABLE UPON REQUEST FROM TRANSPORT EFFICIENCY

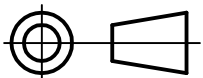
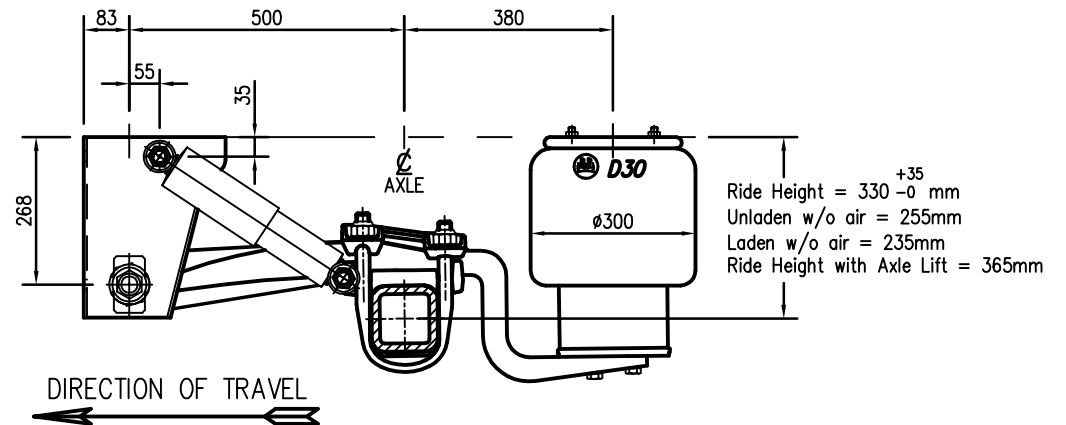
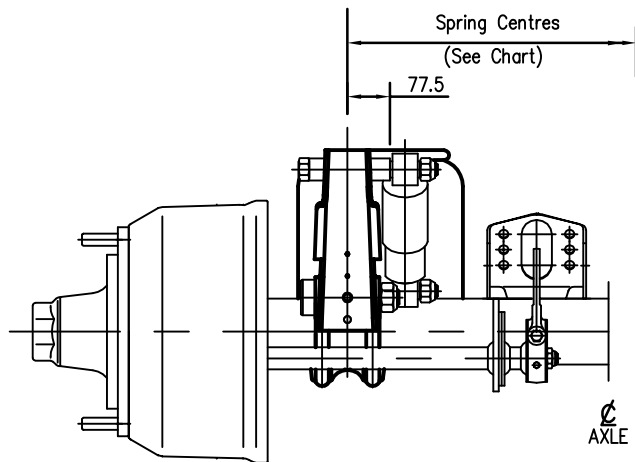
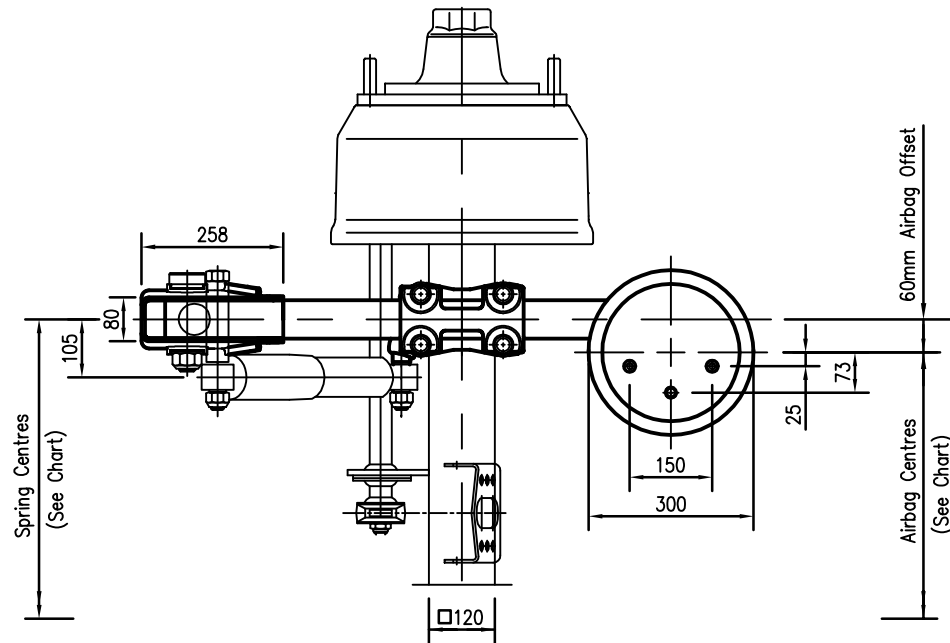
**NOTES:**

-10 Stud Axle shown for illustration purposes only.

- Minimum Axle spacing =1145mm
- Please refer to LO-0018 for hanger bracing instructions.
- Please refer Assembly Guidelines for airbag mounting plate bracing. (Fitment of airbag mounting plate optional)
- Please refer to LO-0032 for catchstrap mounting installation.
- Webbing sling Part No. AS0025/4440 – Standard Fitment.

Allowable Spring / Airbag Centres with BPW Axles to suit:					
Dual 20/22.5" Tyres (1)		Dual 19.5" Tyres (1)		Super Single Tyres (2)	
Spring Crs	Airbag Crs	Spring Crs	Airbag Crs	Spring Crs	Airbag Crs
950	830	950	830	1200	1080
980max	860	980max	860		

- (1) For BPW drum brake axles with nominal track 1820mm to 1840mm, TSB3709 disc brake axles with nominal track 1850 to 1855mm.  
 (2) For BPW axles with nominal track of 2040mm.



UNLESS OTHERWISE STATED ALL DIMENSIONS IN MILLIMETRES.  
 UNLESS OTHERWISE STATED ALL TOLERANCES ARE PER :  
 BPW WN-1.043 & BPW WN-1.047  
 AVAILABLE UPON REQUEST FROM TRANSPORT EFFICIENCY

**Transport EFFICIENCY**  
 PO BOX 58-106 GREENMOUNT, AUCKLAND, NZ  
 PHONE: (09) 2738084.  
 FAX: (09) 2738086.

TITLE **SUSPENSION ASSEMBLY**  
**ALI1 SERIES AMT/D30 AIR SUSPENSION**

THIS DRAWING IS COPYRIGHT AND THE SOLE PROPERTY OF TRANSPORT EFFICIENCY, AND MUST NOT BE COPIED OR LOANED WITHOUT WRITTEN PERMISSION AND MUST BE RETURNED UPON REQUEST.

(RIDE HEIGHT = 330-365MM)

DRAWN	<b>CHETHAN</b>	APPR'D	
DATE	<b>03-09-2012</b>	SCALE	<b>1-10</b>

DRAWING NO	<b>AMT-0002NZ</b>	REV	<b>B</b>
------------	-------------------	-----	----------

**A3**

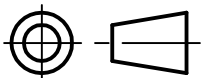
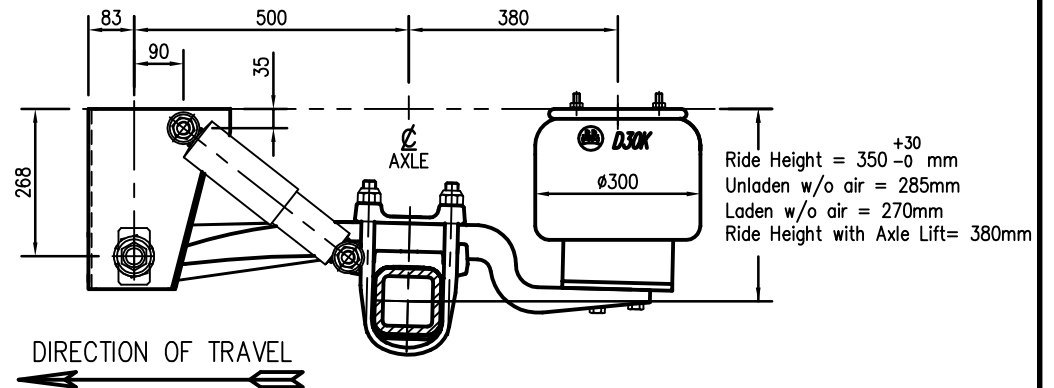
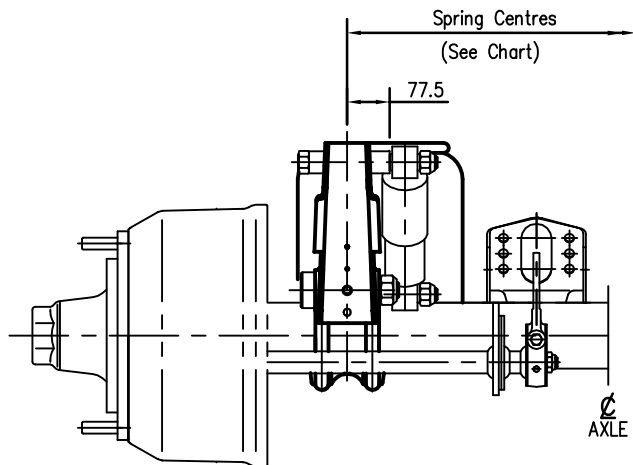
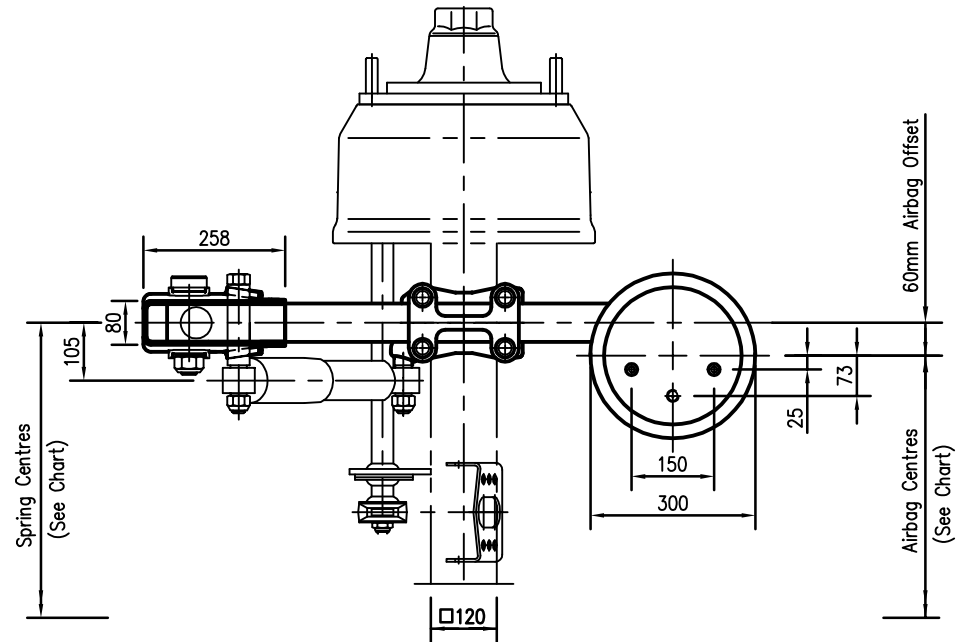
**NOTES:**

-10 Stud Axle shown for illustration purposes only.

- Minimum Axle spacing =1145mm
- Please refer to LO-0018 for hanger bracing instructions.
- Please refer Assembly Guidelines for airbag mounting plate bracing. (Fitment of airbag mounting plate optional)
- Please refer to LO-0032 for catchstrap mounting installation. Webbing sling Part No. AS0025/4230 - Standard Fitment.

Allowable Spring / Airbag Centres with BPW Axles to suit:					
Dual 20/22.5" Tyres (1)		Dual 19.5" Tyres (1)		Super Single Tyres (2)	
Spring Crs	Airbag Crs	Spring Crs	Airbag Crs	Spring Crs	Airbag Crs
950	830	950	830	1200	1080
980max	860	980max	860		

- (1) For BPW drum brake axles with nominal track 1820mm to 1840mm, TSB3709 disc brake axles with nominal track 1850 to 1855mm.  
 (2) For BPW axles with nominal track of 2040mm.



UNLESS OTHERWISE STATED ALL DIMENSIONS IN MILLIMETRES.  
 UNLESS OTHERWISE STATED ALL TOLERANCES ARE PER :  
 BPW WN-1.043 & BPW WN-1.047  
 AVAILABLE UPON REQUEST FROM TRANSPORT EFFICIENCY

**Transport EFFICIENCY**  
 PO BOX 58-106  
 GREENMOUNT, AUCKLAND, NZ  
 PHONE: (09) 2738084.  
 FAX: (09) 2738086.

TITLE **SUSPENSION ASSEMBLY**  
**ALI SERIES AM/D30K AIR SUSPENSION**

THIS DRAWING IS COPYRIGHT AND THE SOLE PROPERTY OF TRANSPORT EFFICIENCY, AND MUST NOT BE COPIED OR LOANED WITHOUT WRITTEN PERMISSION AND MUST BE RETURNED UPON REQUEST.

(RIDE HEIGHT = 350-380MM)

DRAWN	<b>CHETHAN</b>	APPR'D	
DATE	<b>03-09-2012</b>	SCALE	<b>1-10</b>

DRAWING NO	<b>AM-0002NZ</b>	REV	<b>B</b>
------------	------------------	-----	----------

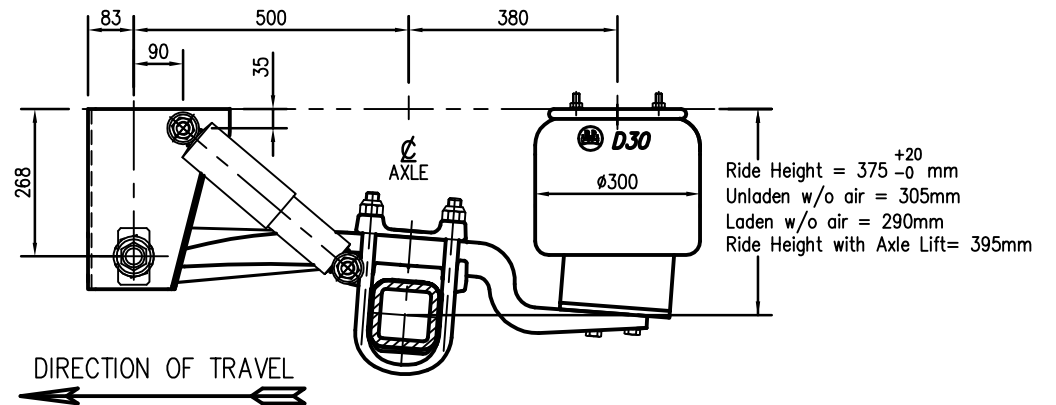
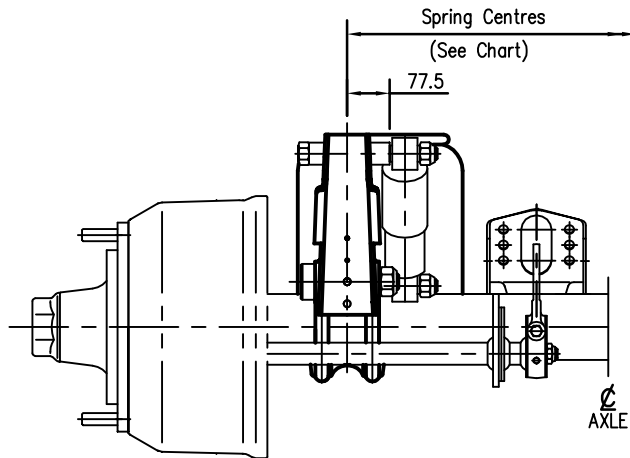
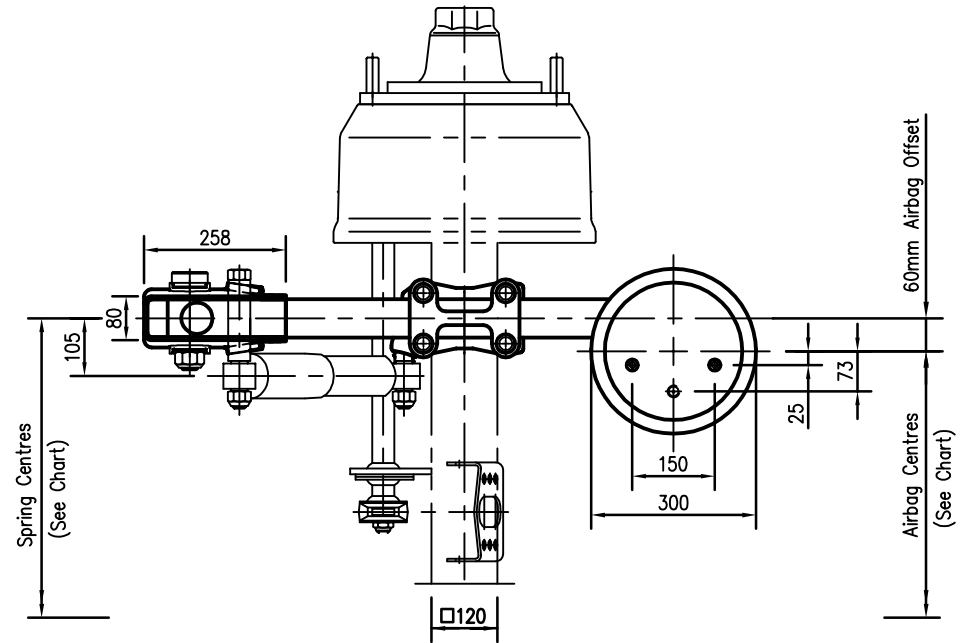
**A3**

**NOTES:**

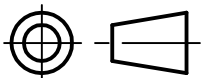
- 10 Stud Axle shown for illustration purposes only.
- Minimum Axle spacing =1145mm
- Please refer to LO-0018 for hanger bracing instructions.
- Please refer Assembly Guidelines for airbag mounting plate bracing. (Fitment of airbag mounting plate optional)
- Please refer to LO-0032 for catchstrap mounting installation. Webbing sling Part No. AS0025/4440 – Standard Fitment.

Allowable Spring / Airbag Centres with BPW Axles to suit:					
Dual 20/22.5" Tyres (1)		Dual 19.5" Tyres (1)		Super Single Tyres (2)	
Spring Crs	Airbag Crs	Spring Crs	Airbag Crs	Spring Crs	Airbag Crs
950	830	950	830	1200	1080
980max	860	980max	860		

(1) For BPW drum brake axles with nominal track 1820mm to 1840mm, TSB3709 disc brake axles with nominal track 1850 to 1855mm.  
 (2) For BPW axles with nominal track of 2040mm.



	<b>Transport</b> EFFICIENCY	PO BOX 58-106 GREENMOUNT, AUCKLAND, NZ PHONE: (09) 2738084. FAX: (09) 2738086.	TITLE <b>SUSPENSION ASSEMBLY</b> <b>ALI SERIES AM/D30 AIR SUSPENSION</b>
	THIS DRAWING IS COPYRIGHT AND THE SOLE PROPERTY OF TRANSPORT EFFICIENCY, AND MUST NOT BE COPIED OR LOANED WITHOUT WRITTEN PERMISSION AND MUST BE RETURNED UPON REQUEST.		
DRAWN <b>CHETHAN</b>	APPR'D	SCALE <b>1-10</b>	(RIDE HEIGHT = 375-395MM) DRAWING NO <b>AM-0003NZ</b>
DATE <b>03-09-2012</b>	SCALE <b>1-10</b>	<b>A3</b>	REV <b>B</b>



UNLESS OTHERWISE STATED ALL DIMENSIONS IN MILLIMETRES.  
 UNLESS OTHERWISE STATED ALL TOLERANCES ARE PER :  
 BPW WN-1.043 & BPW WN-1.047  
 AVAILABLE UPON REQUEST FROM TRANSPORT EFFICIENCY

**NOTES:**

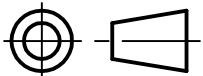
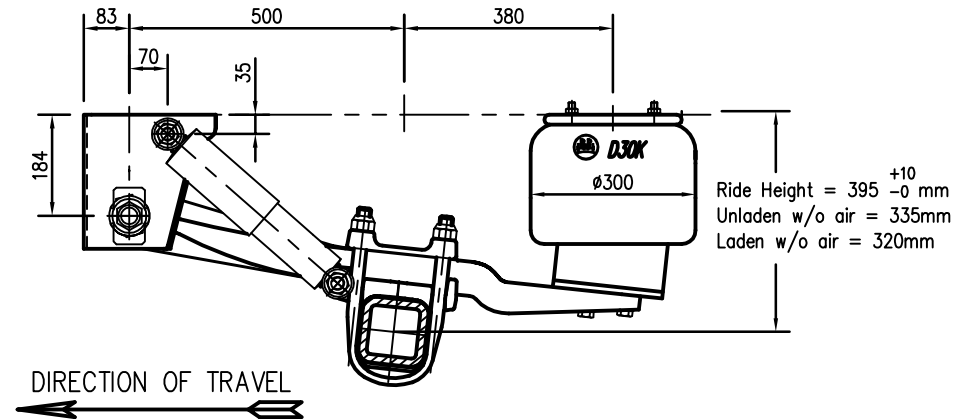
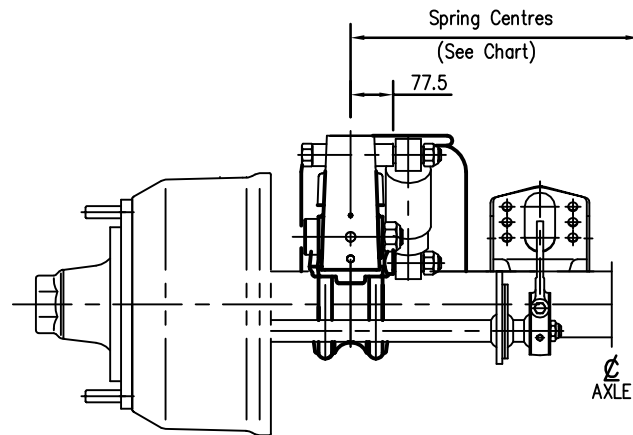
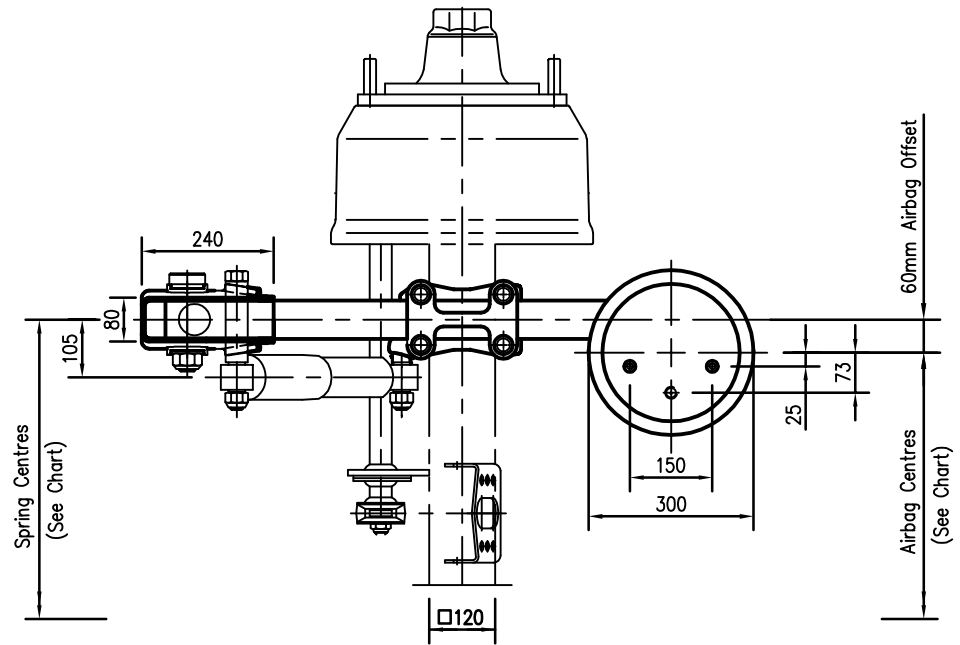
-10 Stud Axle shown for illustration purposes only.

- Minimum Axle spacing =1145mm
- Please refer to LO-0018 for hanger bracing instructions.
- Please refer Assembly Guidelines for airbag mounting plate bracing. (Fitment of airbag mounting plate optional)
- Please refer to LO-0032 for catchstrap mounting installation. Webbing sling Part No. AS0025/4440 - Standard Fitment.

-It is not recommended that Axle lift be installed with this suspension.

Allowable Spring / Airbag Centres with BPW Axles to suit:					
Dual 20/22.5" Tyres (1)		Dual 19.5" Tyres (1)		Super Single Tyres (2)	
Spring Crs	Airbag Crs	Spring Crs	Airbag Crs	Spring Crs	Airbag Crs
950	830	950	830	1200	1080
980max	860	980max	860		

- (1) For BPW drum brake axles with nominal track 1820mm to 1840mm, TSB3709 disc brake axles with nominal track 1850 to 1855mm.
- (2) For BPW axles with nominal track of 2040mm.



UNLESS OTHERWISE STATED ALL DIMENSIONS IN MILLIMETRES.  
UNLESS OTHERWISE STATED ALL TOLERANCES ARE PER :  
BPW WN-1.043 & BPW WN-1.047  
AVAILABLE UPON REQUEST FROM TRANSPORT EFFICIENCY

**Transport EFFICIENCY**  
PO BOX 58-106  
GREENMOUNT, AUCKLAND, NZ  
PHONE: (09) 2738084.  
FAX: (09) 2738086.

THIS DRAWING IS COPYRIGHT AND THE SOLE PROPERTY OF TRANSPORT EFFICIENCY, AND MUST NOT BE COPIED OR LOANED WITHOUT WRITTEN PERMISSION AND MUST BE RETURNED UPON REQUEST.

DRAWN	CHETHAN	APPR'D	
DATE	03-09-2012	SCALE	1-10

**A3**

TITLE **SUSPENSION ASSEMBLY**  
**ALI SERIES A0/D30K AIR SUSPENSION**

(RIDE HEIGHT = 395-405MM)

DRAWING NO	A0-0002NZ	REV	B
------------	-----------	-----	---

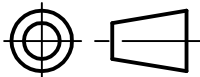
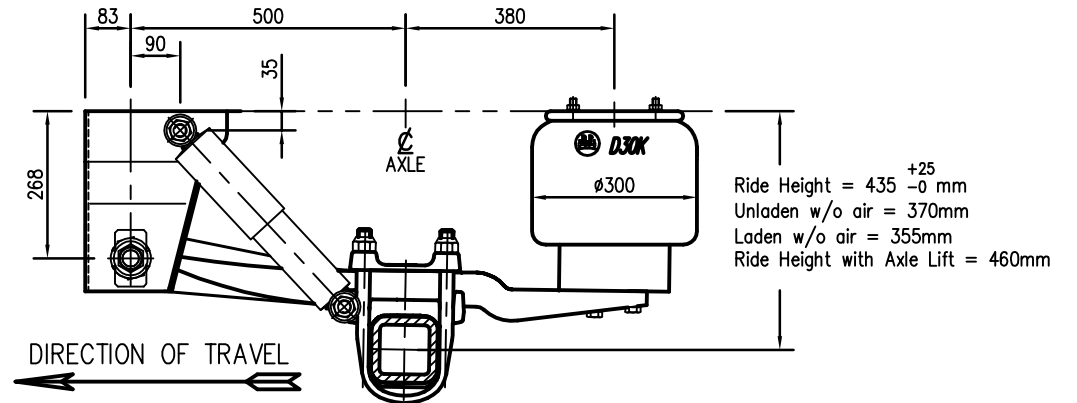
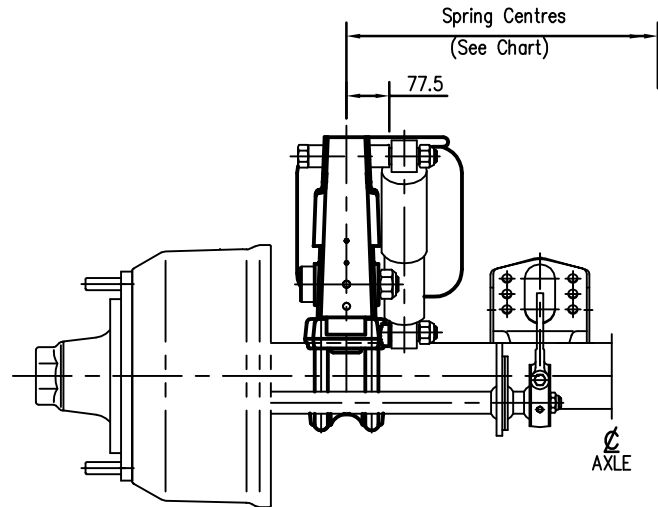
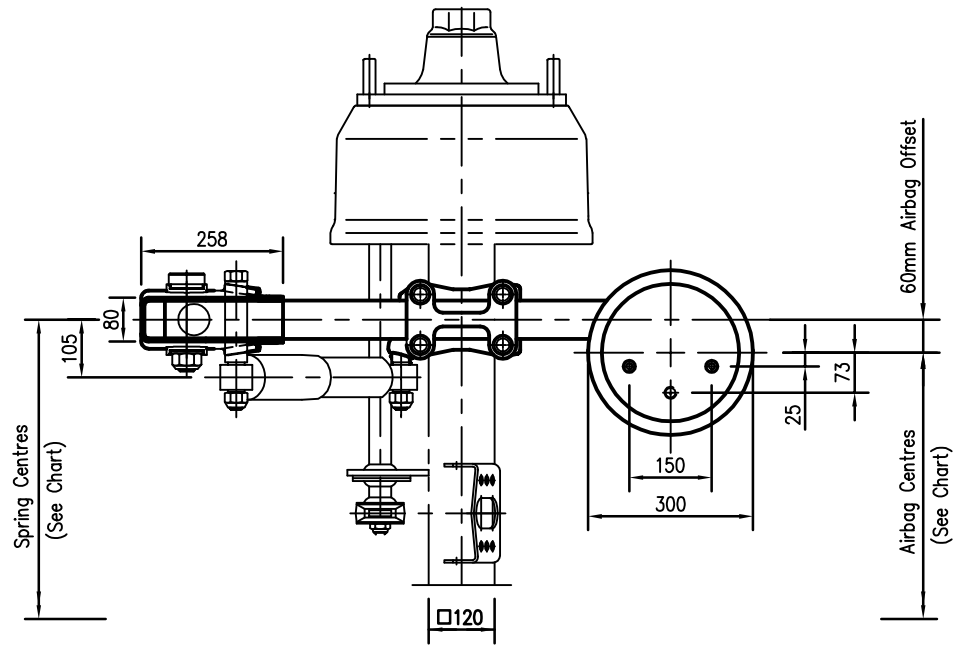
**NOTES:**

-10 Stud Axle shown for illustration purposes only.

- Minimum Axle spacing =1145mm
- Please refer to LO-0018 for hanger bracing instructions.
- Please refer Assembly Guidelines for airbag mounting plate bracing. (Fitment of airbag mounting plate optional)
- Please refer to LO-0032 for catchstrap mounting installation. Webbing sling Part No. AS0025/4800 - Standard Fitment.

Allowable Spring / Airbag Centres with BPW Axles to suit:					
Dual 20/22.5" Tyres (1)		Dual 19.5" Tyres (1)		Super Single Tyres (2)	
Spring Crs	Airbag Crs	Spring Crs	Airbag Crs	Spring Crs	Airbag Crs
950	830	950	830	1200	1080
980max	860	980max	860		

- (1) For BPW drum brake axles with nominal track 1820mm to 1840mm, TSB3709 disc brake axles with nominal track 1850 to 1855mm.  
 (2) For BPW axles with nominal track of 2040mm.



UNLESS OTHERWISE STATED ALL DIMENSIONS IN MILLIMETRES.  
 UNLESS OTHERWISE STATED ALL TOLERANCES ARE PER :  
 BPW WN-1.043 & BPW WN-1.047  
 AVAILABLE UPON REQUEST FROM TRANSPORT EFFICIENCY

	PO BOX 58-106 GREENMOUNT, AUCKLAND, NZ PHONE: (09) 2738084. FAX: (09) 2738086.		TITLE <b>SUSPENSION ASSEMBLY</b> <b>ALI SERIES A0/D30K AIR SUSPENSION</b>	
	THIS DRAWING IS COPYRIGHT AND THE SOLE PROPERTY OF TRANSPORT EFFICIENCY, AND MUST NOT BE COPIED OR LOANED WITHOUT WRITTEN PERMISSION AND MUST BE RETURNED UPON REQUEST.		<b>(RIDE HEIGHT = 435-460MM)</b>	
DRAWN	<b>CHETHAN</b>	APPR'D		DRAWING NO
DATE	<b>03-09-2012</b>	SCALE	<b>1-10</b>	<b>A0-0001NZ</b>
			<b>A3</b>	REV
				<b>B</b>